



Gipsy Hill | Woodlesford | LS26 8XD

£300,000

Three bedroom extended detached bungalow | Council Tax Band D | EPC Rating D

Emsleys | estate agents

***ENVIABLE CORNER PLOT. EXTENDED. OVER 1400 sq ft. DOUBLE GARAGE. VACANT POSSESSION. ***

A delightful extended detached bungalow offering a perfect blend of comfort and convenience. With three well-proportioned bedrooms, this property is potentially ideal for families or those seeking a peaceful retreat. The two spacious reception rooms provide ample space for relaxation and entertaining, ensuring that you can enjoy both intimate gatherings and larger celebrations with ease.

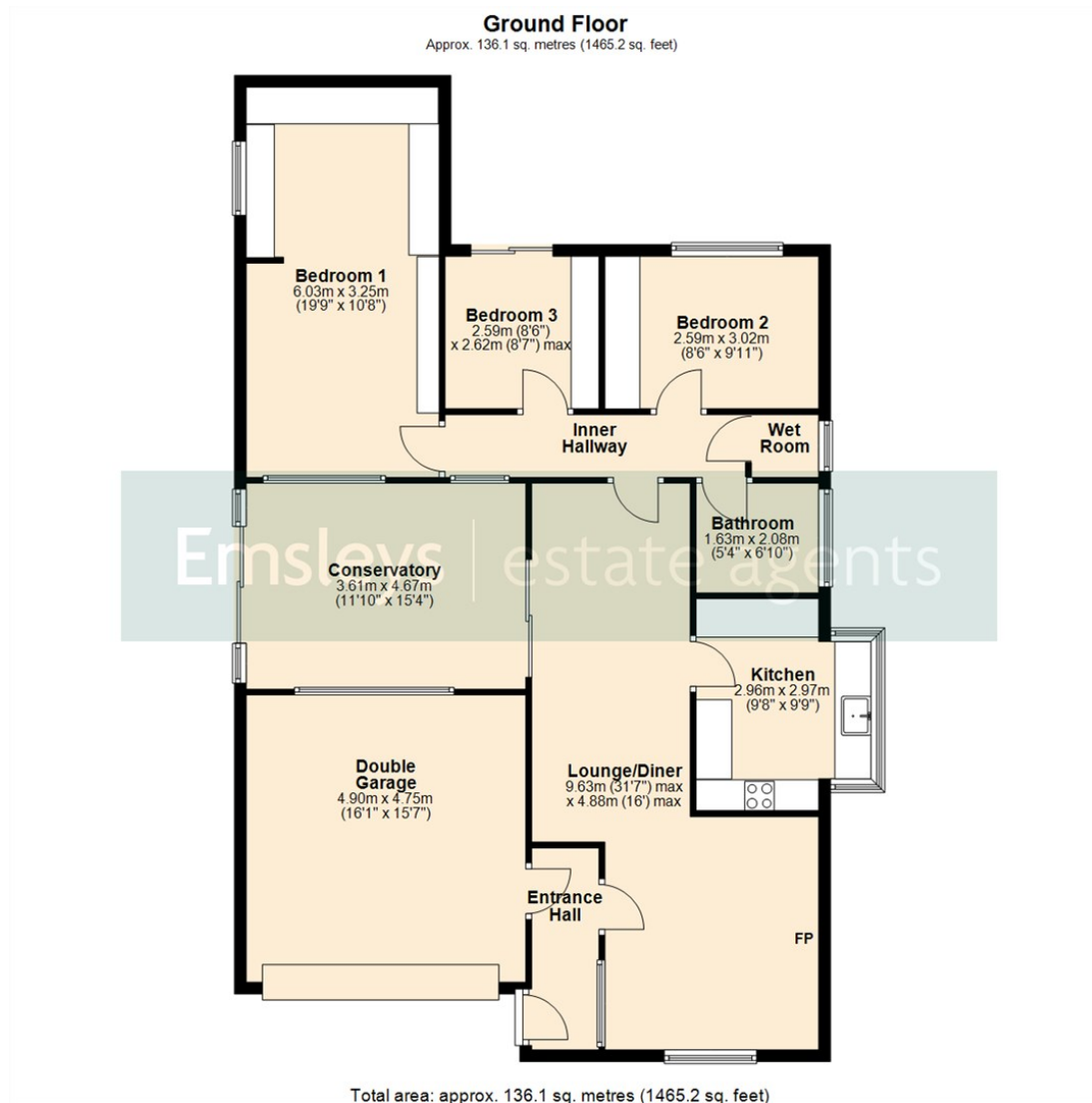
The bungalow boasts two bathrooms, including a modern wet room, which adds a touch of practicality to daily living. The property has been thoughtfully extended, enhancing its living space and making it even more inviting.

For those with vehicles, the property features generous parking for up to four vehicles including a double garage, providing secure storage and easy access.

With vacant possession and no chain, this home is ready for you to move in without delay. Whether you are looking to downsize or seeking a family home in a friendly neighbourhood, this bungalow presents an excellent opportunity. Do not miss the chance to make this lovely property your own in the sought-after location of Woodlesford.







These details are for guidance only and complete accuracy cannot be guaranteed. If there is any point, which is of particular importance, verification should be obtained. They do not constitute a contract or part of a contract. All measurements are approximate. No guarantee can be given with regard to planning permissions or fitness for purpose. No apparatus, equipment, fixture or fitting has been tested. Items shown in photographs are NOT necessarily included. Interested Parties are advised to check availability and make an appointment to view before travelling to see a property.



65 Commercial Street | Rothwell | Leeds | LS26 0QD
t: 0113 201 4040 www.emsleysestateagents.co.uk

Emsleys | estate agents